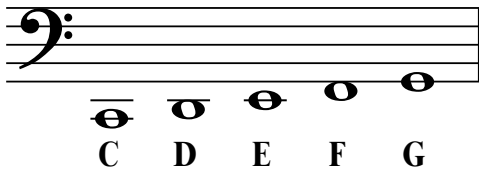
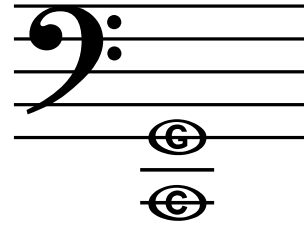
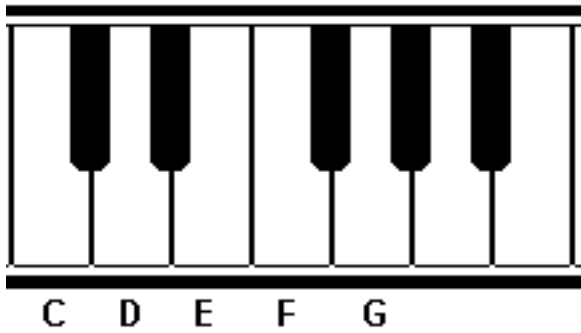


# Η γειτονιά της C

Ασκήσεις



*Γράψε μέσα στο τετραγωνάκι το όνομα της νότας:*

A bass clef staff with three notes: C, G, and G. Below each note is a square box for labeling.

A bass clef staff with seven notes: C, D, E, F, G, F, and C. Below each note is a square box for labeling.

A bass clef staff with three notes: C, G, and C. Below each note is a square box for labeling.

A musical staff in bass clef containing six notes: G, D, C, D, E, F. Below each note is an empty square box for labeling.

*Διάβασε το όνομα της νότας και ζωγραφισέ την στο πεντάγραμμο :*

An empty musical staff with a bass clef, divided into four measures.

**G                    D                    C                    E**

An empty musical staff with a bass clef, divided into four measures.

**F                    G                    D                    E**

An empty musical staff with a bass clef, divided into four measures.

**C                    D                    E                    D**

An empty musical staff with a bass clef, divided into four measures, ending with a double bar line.

**C                    E                    D                    F**